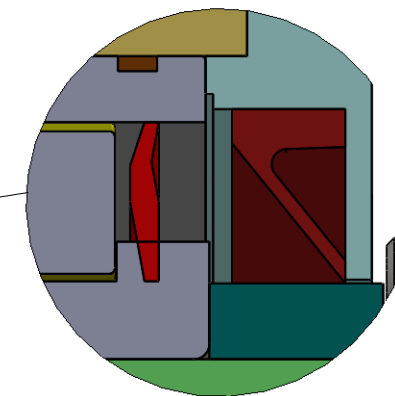
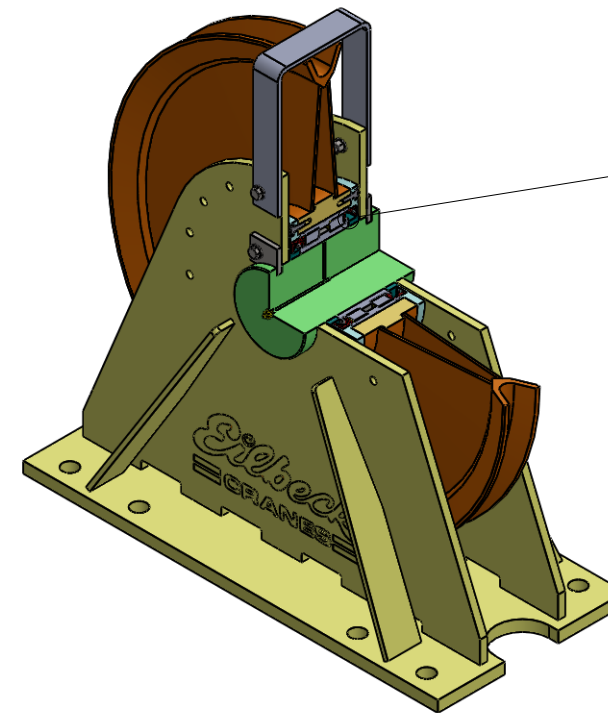
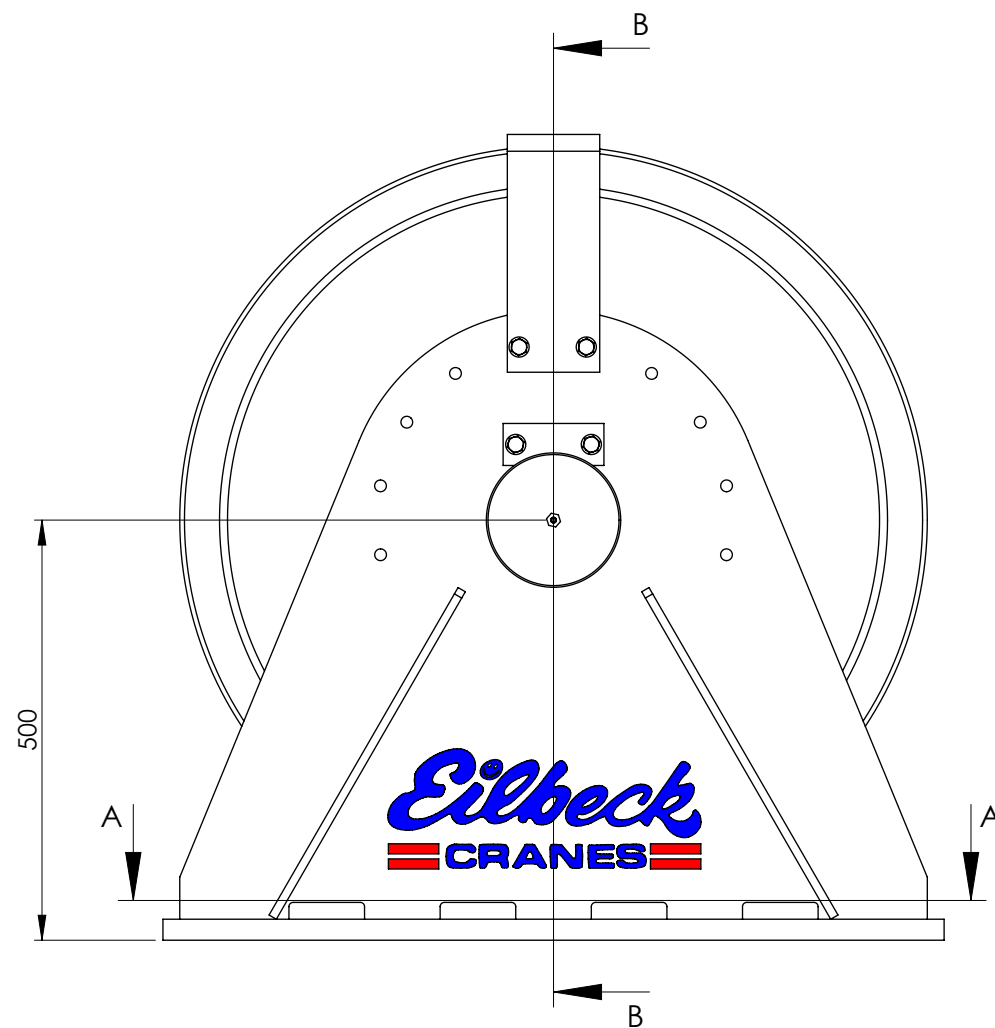
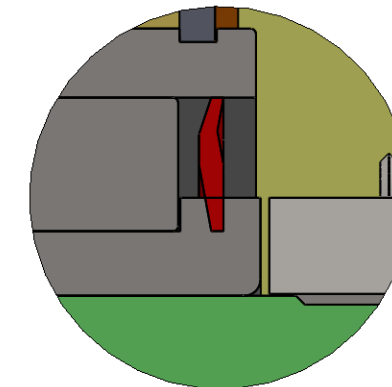


SECTION A-A



SHEAVE EQUIPED WITH SEAL ARRANGEMENT TYPE A WITH CYLINRICAL BEARING SEALED AND V-RING SEAL FOR ADDITIONAL DIRT PROTECTION



SHEAVE EQUIPED WITH SEAL ARRANGEMENT TYPE B WITH CYLINRICAL BEARING SEALED

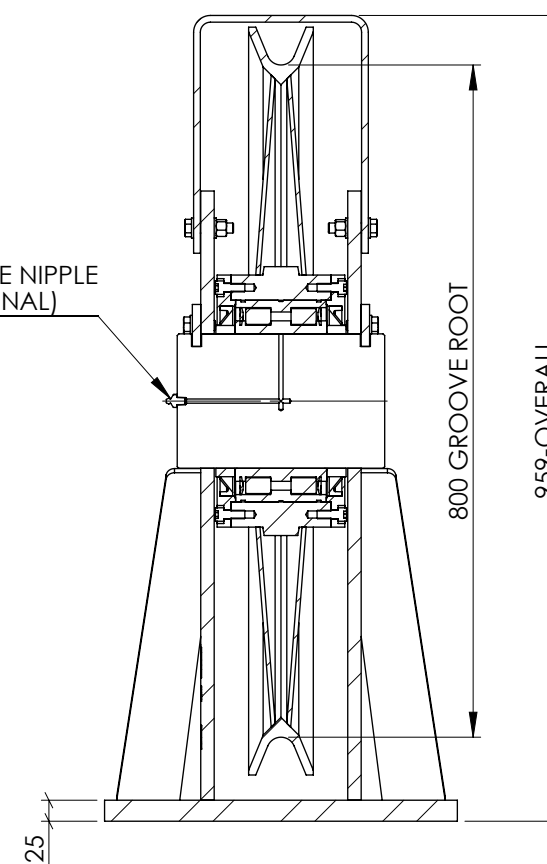
ROPE DIA. [mm]	MAXIMUM MECHANISM CLASS	ROPE TENSION * [kN]
26	M8	68
28	M8	81
30	M7	119
32	M7	135
36	M5	264
38	M5	301
40	M5	330
42	M4	410

* ROPE TENSION IS BASED ON ROPE GRADE 1960 MPa
LOWER MECHANISM CLASS INCREASES ROPE TENSION.

TECHNICAL DATA:

- SHEAVE CONFORM TO AS 1418.1, FEM1.001 AND DIN 15020.
- MECHANISM CLASS RANGE FROM M1 TO M8.
- ROPE GUARD, ONE OFF IS SUPPLIED AS STANDARD.
- SHEAVE MOUNTING BOLT SHALL BE GRADE 8.8
- FRAME MOUNTING WITH BASE PLATE IN COMPRESSION IS CONSIDERED
- FOR OTHER MOUNTING, PLEASE CONSULT EILBECK CRANES WINCH DIVISION.
- SHEAVE DESIGNS ARE AVAILABLE FOR LARGER ROPE DIAMETER.
- SHEAVE PIN GREASE NIPPLE SUPPLIED AS OPTIONAL.
- SURFACE FINISH: PAINTED, COLOUR Y14 - SAFETY YELLOW.
- ROPE GROOVE - HARDNESS : 200 - 250 HB
- SHEAVE FRAME WELDING TO AS 1554.1.SP
- SHAFT MATERIAL - BRIGHT STEEL.

GREASE NIPPLE
(OPTIONAL)



SECTION B-B

DESIGN REFERENCES			APPROVAL FOR CONSTRUCTION			CLIENT: EILBECK CRANES			DRAWING TITLE WIRE ROPE SHEAVE ASSEMBLY SINGLE SHEAVE BLOCK 800 DIA GENERAL ARRANGEMENT		
STRUCTURAL REF	---	---	CHECKED BY	BO	---	PROJECT:	STANDARD COMPONENTS				
STRUCTURAL BY	---	---	APPROVED	TLE	---	EQUIPMENT ID	---	<div><div><div></div><div></div></div><div><div>3rd Angle</div><div>UNITS mm</div></div></div> <div>copyright by Eilbeck Cranes www.eilbeckcranes.com</div>			
REGO BODY	---	---	DATE	16.08.13	---						
MECHANICAL	EC	---	SIGNED	---	---						
ELECTRICAL	EC	---				SCALE			SIZE	DWG NO	REV
						1:8			A3	ECS-800A/28-A-F800	A