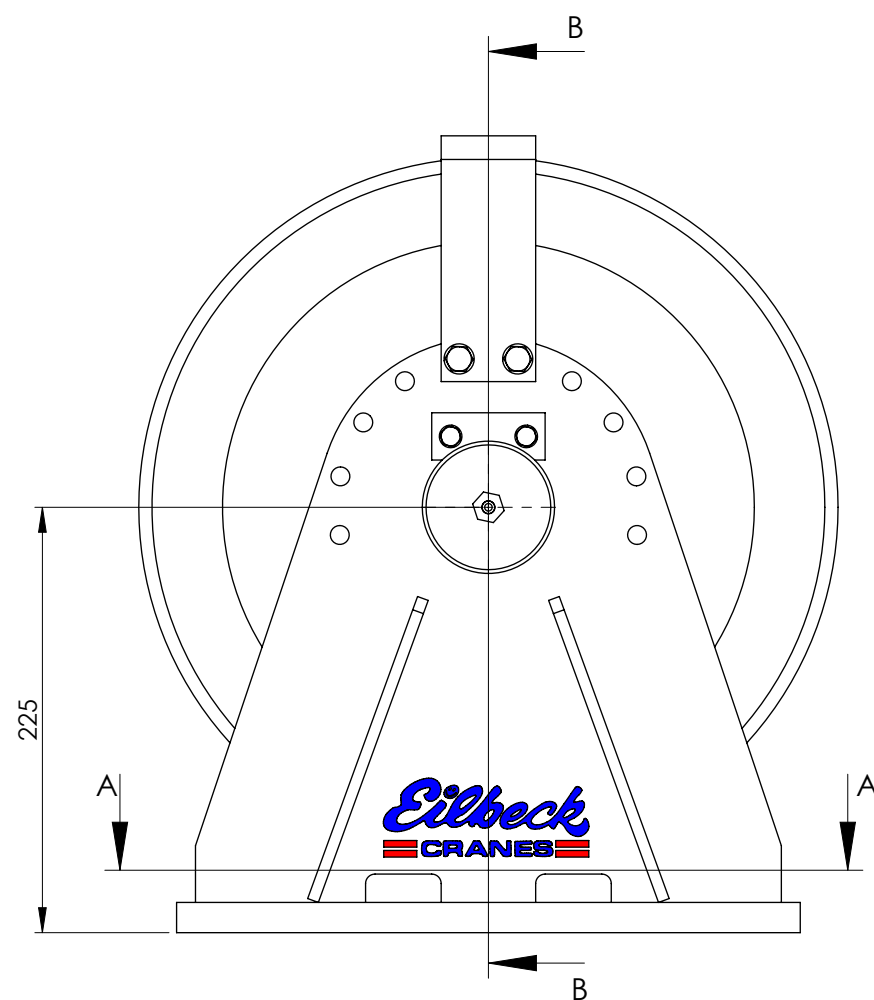
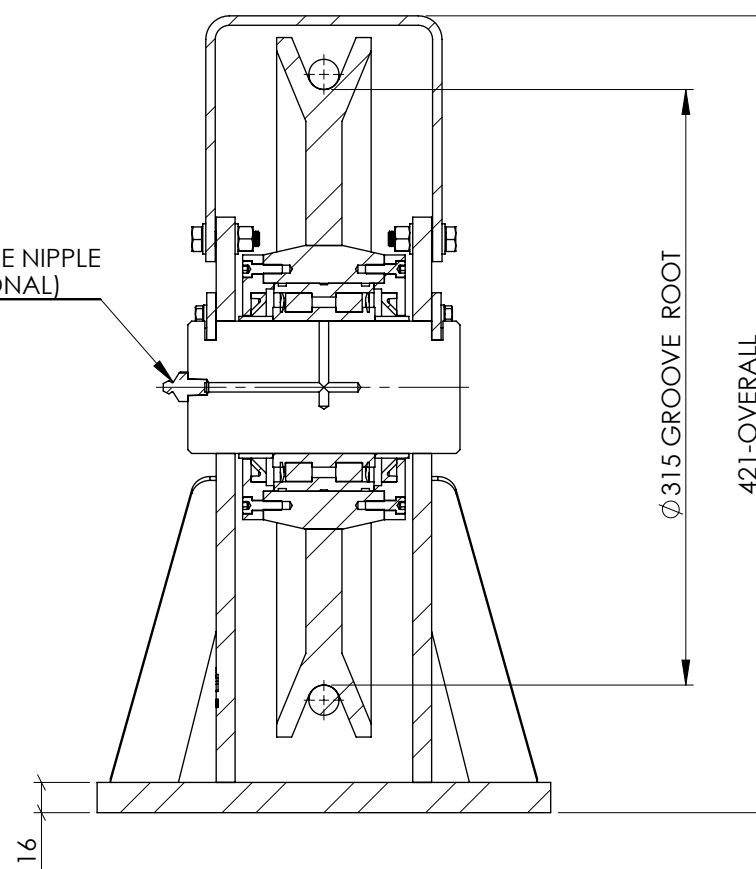


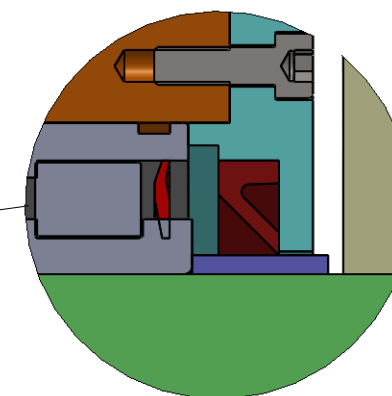
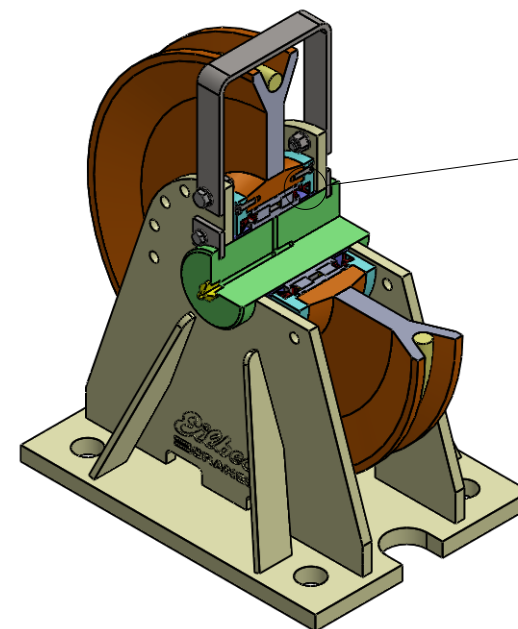
SECTION A-A



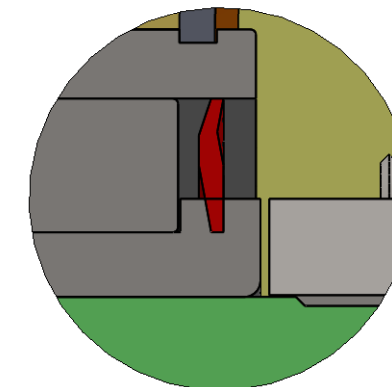
GREASE NIPPLE
(OPTIONAL)



SECTION B-B



SHEAVE EQUIPED WITH SEAL ARRANGEMENT TYPE A
WITH CYLINRICAL BEARING SEALED AND V-RING SEAL
FOR ADDITIONAL DIRT PROTECTION



SHEAVE EQUIPED WITH SEAL ARRANGEMENT TYPE B
WITH CYLINRICAL BEARING SEALED

ROPE DIA. [mm]	MAXIMUM MECHANISM CLASS	ROPE TENSION * [kN]
10	M8	10
12	M7	18
14	M6	32
16	M5	52
18	M3	82
20	M2	109
22	M2	135
24	M1	164

* ROPE TENSION IS BASED ON ROPE GRADE 1960 MPa
LOWER MECHANISM CLASS INCREASES ROPE TENSION.

TECHNICAL DATA:

- SHEAVE CONFORM TO AS 1418.1, FEM1.001 AND DIN 15020.
- MECHANISM CLASS RANGE FROM M1 TO M8.
- ROPE GUARD, ONE OFF IS SUPPLIED AS STANDARD.
- SHEAVE MOUNTING BOLT SHALL BE GRADE 8.8
- FRAME MOUNTING WITH BASE PLATE IN COMPRESSION IS CONSIDERED
FOR OTHER MOUNTING, PLEASE CONSULT EILBECK CRANES WINCH DIVISION.
- SHEAVE DESIGNS ARE AVAILABLE FOR LARGER ROPE DIAMETER.
- SHEAVE PIN GREASE NIPPLE SUPPLIED AS OPTIONAL.
- SURFACE FINISH: PAINTED, COLOUR Y14 - SAFETY YELLOW.
- ROPE GROOVE - HARDNESS : 200 - 250 HB
- SHEAVE FRAME WELDING TO AS 1554.1.SP
- SHAFT MATERIAL - BRIGHT STEEL.

FILE LOCATION: N:\Cad\6.SolidWorks\Sheaves\Sheave-Standard Sizes\SHEAVE GA\315\EC-315A-28-A-F315.sldwtw

REV	DATE	REVISION DESCRIPTION	TK	BO	TLE
A	21/08/13	ISSUED FOR INFORMATION	DRN	CHK	APP

DESIGN REFERENCES		APPROVAL FOR CONSTRUCTION	
STRUCTURAL REF	---	CHECKED BY	BO
STRUCTURAL BY	---	APPROVED	TLE
REGO BODY	---	DATE	-
MECHANICAL	EC	SIGNED	---
ELECTRICAL	EC		

THIS DRAWING IS
CONFIDENTIAL AND
IS THE PROPERTY
OF EILBECK CRANES
PTY LTD. AND MUST
NOT BE COPIED,
LENT OR DISCLOSED
TO A THIRD PARTY
WITHOUT THEIR
WRITTEN CONSENT.

CLIENT:	EILBECK CRANES
PROJECT:	STANDARD COMPONENTS
EQUIPMENT ID	---
 	
© copyright by Eilbeck Cranes www.eilbeckcranes.com	



DRAWING TITLE		REV	
WIRE ROPE SHEAVE ASSEMBLY		A	
SINGLE SHEAVE BLOCK 315 DIA			
GENERAL ARRANGEMENT			
SCALE	SIZE	DWG NO	
1:8	A3	ECS-315A/28-A-F315	